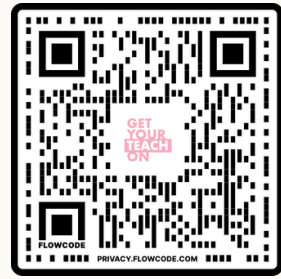


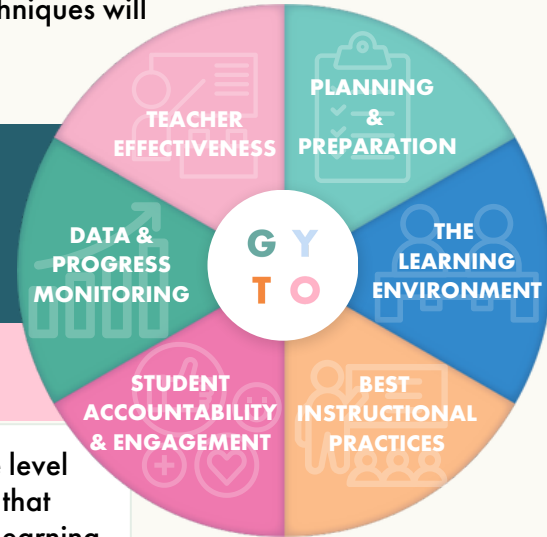
WHY GYTO?



Our Get Your Teach On Leadership and Content Development team has worked to create an engaging and transformational educator professional development experience that aligns directly to the needs of schools and teachers across the country by helping educators develop consistent best instructional practices and processes from start to finish to accelerate student learning. These evidence and research based best practices, strategies, and techniques will directly impact overall educator effectiveness and student achievement and transform instruction and student learning like never before.

BUILDING THE TRANSFORMATIVE TEACHER

Developing Consistent Best Instructional Practices and Processes from Start to Finish to Completely Transform Your School



 <p>PLANNING & PREPARATION</p>	<p>Intentional and meaningful planning, using specific grade level content standards and high quality instructional materials that addresses the needs of all learners to support mastery of learning goals.</p>
 <p>THE LEARNING ENVIRONMENT</p>	<p>Creates and maintains a collaborative, safe, efficient, and effective learning environment that supports each student's diverse needs and promotes recognition of students' diverse personal experiences to build relationships of trust within the classroom.</p>
 <p>BEST INSTRUCTIONAL PRACTICES</p>	<p>Implementation of evidence and research-based best instructional strategies and techniques to accelerate student learning, growth, and achievement through rigorous and consistent instruction, including opportunities for problem solving, critical and creative thinking, meaningful and purposeful discourse, and high-impact instructional delivery.</p>
 <p>STUDENT ACCOUNTABILITY & ENGAGEMENT</p>	<p>Builds engaging, intentional, and rigorous learning experiences through setting high expectations and consistency within instructional practices that requires all students to take ownership of and be held accountable for their individual learning.</p>
 <p>DATA & PROGRESS MONITORING</p>	<p>Continually monitors and analyzes student learning and progress towards mastery of learning goals for all students using a variety of progress monitoring and assessment techniques to make immediate instructional decisions that support student growth and acceleration.</p>
 <p>TEACHER EFFECTIVENESS</p>	<p>Develops strong foundational teaching practices and commitments that support best practices and professional growth through consistent reflection of professional practices to support student learning, development, and achievement at a high level.</p>

Get Your Teach On sessions are intentionally selected for attendees to experience the full professional development experience. Each session is hands-on, interactive, collaborative, and allows time for teachers to take what they've learned and apply it to their specific grade level standards or content area. Sessions are structured to meet the needs of all learners, modeling best practices for direct and immediate implementation in classrooms.